

# “Adanalı” açmazı

Diyagram ve dama notasyonu ile sunduğumuz açmazlara devam ediyoruz.

1.h4-h5

Beyaz, 1 taş vererek kombinezona başlıyor.

1..h6xh5

2.g4-g5

Beyaz, 1 taş daha veriyor.

2..g6xg5

3.b3-b4

Beyaz, 2 taş vererek siyahı damaya çıkarıyor.

3..b5xb4xb2 = b1D

4.a2-b2

Beyaz, damaya 1 taş yediyor.

4..b1Dxb2

5.c2-b2

Beyaz, damaya 1 taş daha veriyor.

5..b5Dxb2

6.c3-c4

Beyaz, 3 taş daha vererek siyahı ikinci kez damaya çıkarıyor.

6..c5xc4xd3xe2 = e1D

Siyah, iki yerden taş üstü. d hattında 2 taş istiyor. Ayrıca eldeki daması 1 taş istiyor. Şimdi Beyaz taşa basarak damaya çıkmak şansını kullanıyor.

7.a3-a4

7..d5xd4xd2 = d1D

8.a4xa5xa7 = a8D

8..e1Dxe4

9.a8D-h8

Beyaz, daması ile toplama hamlesini yaptı

9..g4xf4

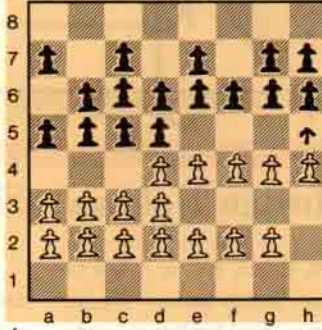
10.h8Dxh7xe5xb6x

c7xd6xe4xf6x

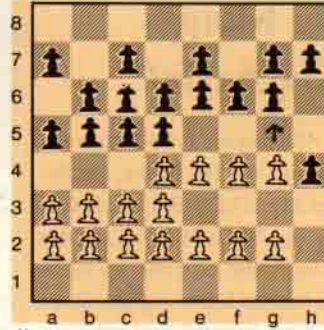
e7xc6xd1xh4 xg

7xe6xb1

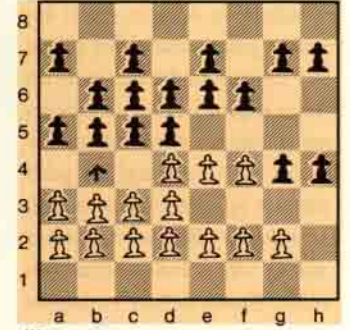
Mükemmel bir kombinasyon!



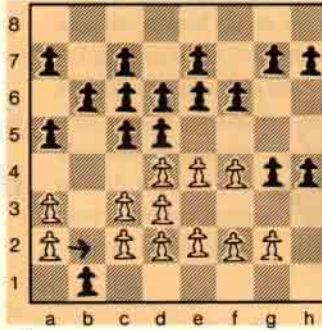
I.



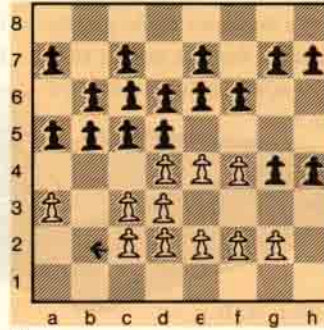
II.



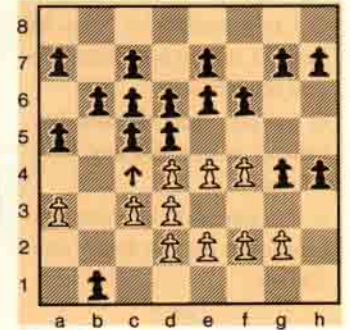
III.



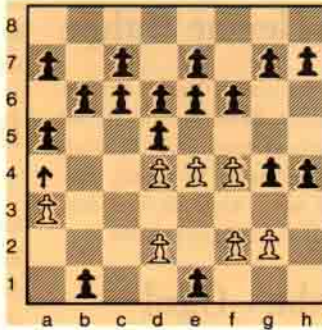
IV.



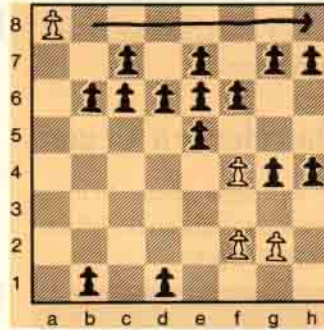
V.



VI.



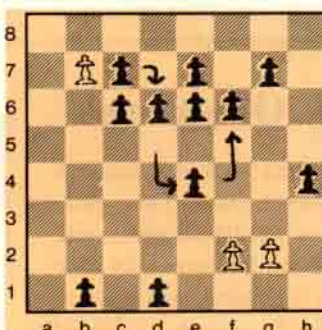
VII.



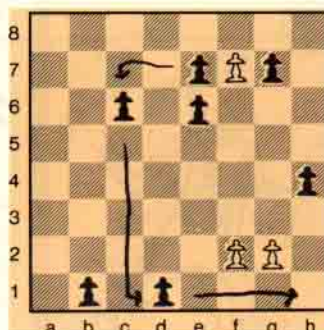
VIII.



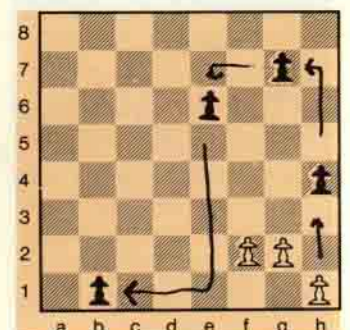
IX.



X.



XI.



XII.