



## SATRANÇ PROBLEMLERİ

No : 4 İki hamlede mat

3 No'lu problemin çözümü :

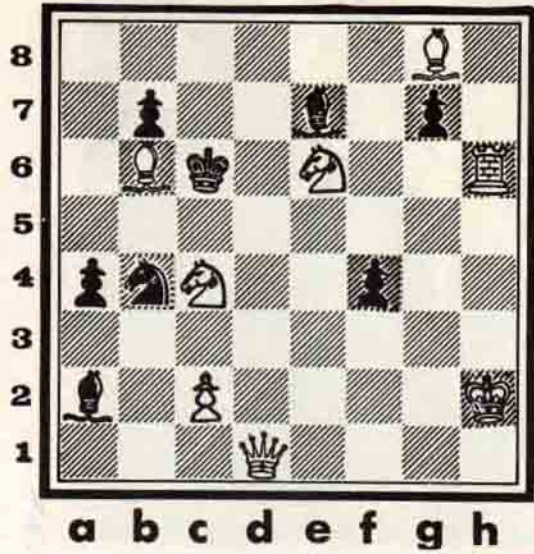
1. Kh2, ŞxP

a) 2. FC6 + ŞxP

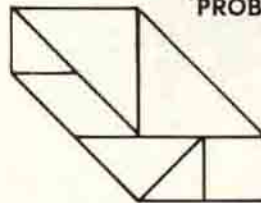
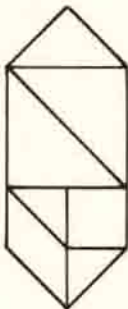
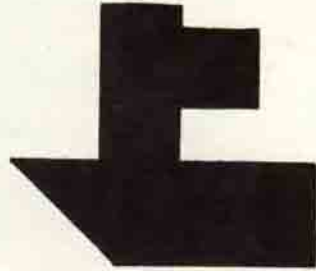
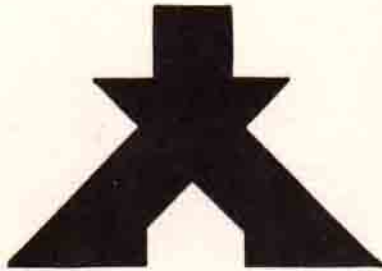
3. FCS + Mat

b) 2. FC6 + Şa5

3. Kh5 + Mat



## YENİ TANGRAM PROBLEMLERİ



GEÇEN SAYIDAKİ TANGRAM PROBLEMLERİNİN ÇÖZÜMÜ